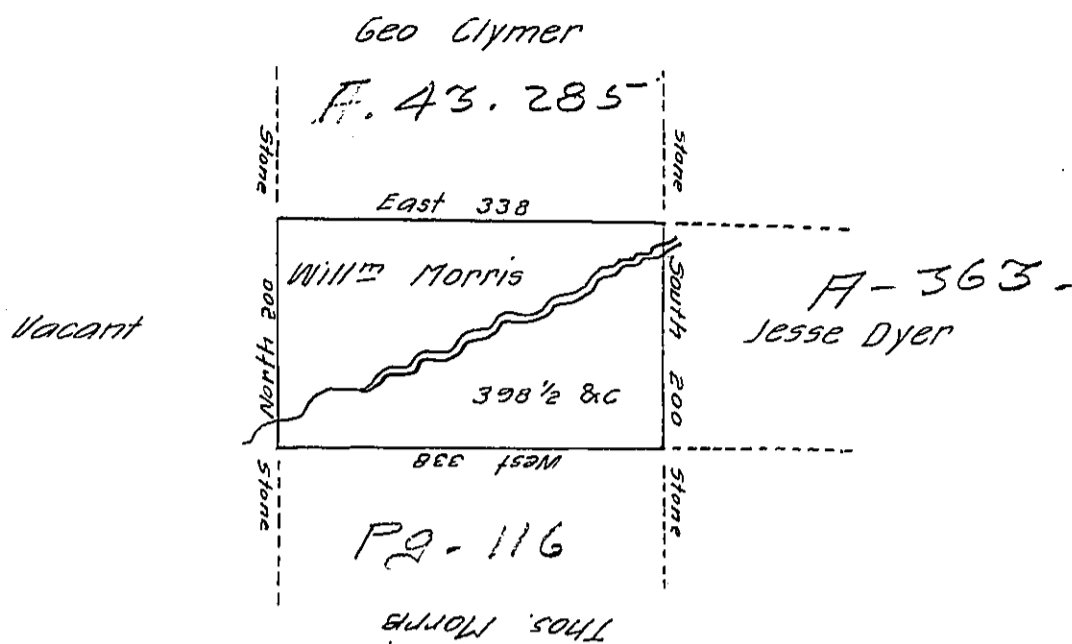


Derison -
Luzerne



A Draft of a Tract of Land called _____
 situate on the water of Letti joining Land surveyed for Geo.
 Clymer & others in Luzerne County. Containing three hundred &
 ninety eight acres $\frac{1}{2}$ & allowance of six p. cent for Roads &c.
 surveyed for William Morris the 20th day of June 1792 in pur-
 suance of a warrant dated the 4th day of April 1792. by
 Wm Gray D.S.

To Daniel Brodhead Esq^r }
 Survr^g Gen^l }

IN TESTIMONY that the above is a copy of the original remaining on file in
 the Department of Internal Affairs of Pennsylvania, made
 conformably to an Act of Assembly approved the 16th day of
 February, 1833, I have hereunto set my Hand and caused
 the Seal of said Department to be affixed at Harrisburg,
 this third day of January 1906

Geo. A. R. Derison
 Secretary of Internal Affairs.